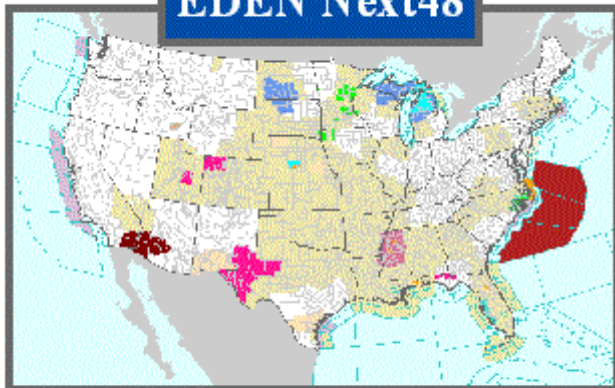


EDEN Next48



One stop source for an immediate overview of current weather, forecasts, radar, flood status, drought information, and more for every state across the nation!

Point Ag Forecast

Snow Showers	Scattered	Scattered
WIND CHILL	16°	18°
SPRAY COND	POOR	POOR
DRY COND	FAIR	FAIR
LIVESTOCK COLDSTRESS	DANGER	DANGER

7 Day Forecast of both weather and Ag related conditions. Available for the entire nation and at your farm!

Rainfall @ Your Farm

Rainfall Estimates (inch)			
Previous Date	Total	Normal	Departure
Last 1 Days	0	0.12	-0.12
Last 3 Days	0	0.35	-0.35
Last 7 Days	0.55	0.82	-0.16
Last 14 Days	0.82	1.65	-0.83
Last 30 Days	2.67	3.50	-0.83
Last 60 Days	6.48	6.84	-0.36
Last 90 Days	12.41	10.70	1.71
Last 120 Days	14.54	14.16	0.38
Last 180 Days	21.06	20.23	0.83

Takes the location of your farm and gives you the precipitation estimates for each day going back 180 days!

UK Ag Weather Observer



Monthly article to describe the past month's weather conditions for Kentucky, in addition to forecasts, outlooks, and the current month's primary Ag operations.

UK Ag Weather Center

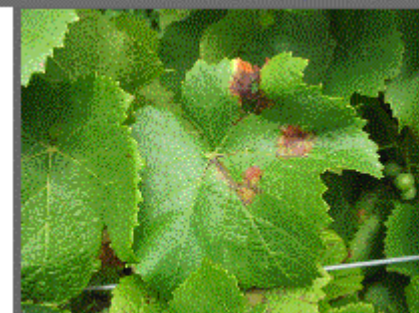
weather.uky.edu

Providing Agricultural Weather Services
Across Kentucky and the Nation

Contacts

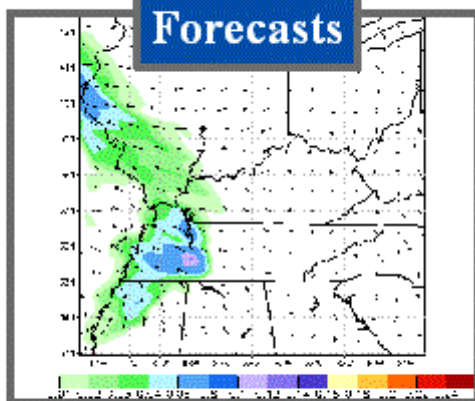
UK Ag Weather Center: (859) 257-3000
Tom Priddy: priddy@uky.edu or at ext. 245
Matt Dixon: mdi227@uky.edu or at ext. 244

KY Insect/Disease Models



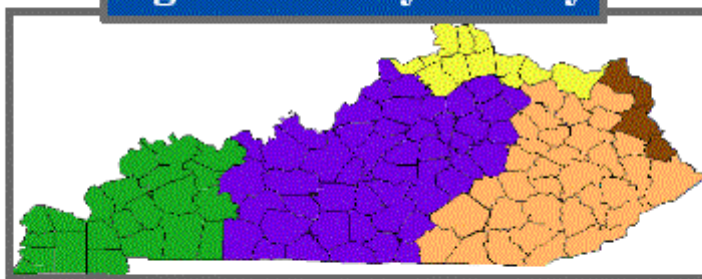
Prediction models for fruit trees, grapes, and turfgrass to review the current and future onset of disease or insects.

Forecasts



The Ag Weather Center offers several unique models and forecasts. The image above displays the WRF Precipitation model, which has been known for its reliable accuracy!

Ag Weather by County



Ag Weather Information for any county across the nation, including drought, current conditions, forecasts, hazardous outlooks, and much more!

CoCoRaHS



Community Collaborative Rain, Hail, and Snow Network of Kentucky